

UP-V9900 Series Point of Sale System: Flexible and open for virtually any business.

Offering the flexibility to run the QSR/TSR/Retail Convenience/Gas Station software that best fits your business, the Open Platform Sharp UP-V9900 Series of Point-of-Sale Systems provides owners exceptional operational capabilities. All three models in the UP-V9900 Series offer operators a 15" Class (15" diagonal) TFT LCD touch screen with brilliant clarity, optimum readability and ease-of-use. Designed for heavy daily usage, the UP-V9900 delivers high durability and features a water-resistant LCD screen, making it ready for virtually any demanding retail, restaurant and convenience environment. The Open Platform UP-V9900 series offers a solution that is ready to meet the demands of your business.



Valcretec

Manufactured by Valcretec

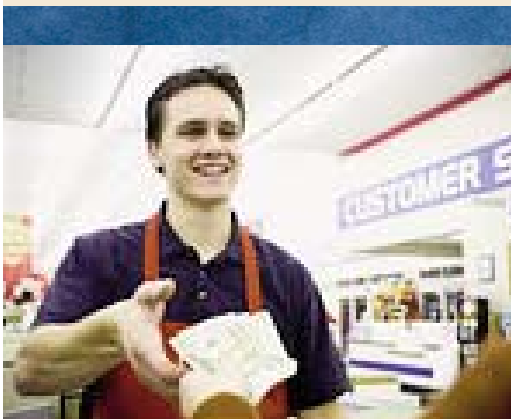
Space Saving Design

Ready for Business

With an innovative design that allows for minimal use of counter space, the Sharp UP-V9900 Series fits into many tight work environments where space is at a premium. With its pivot-design concept, this versatile point-of-sale terminal has the flexibility to provide operators and customers optimal visibility. And with a splash-resistant LCD screen, the UP-V9900 Series is ready to meet the needs of your business.

Ready for Customers

To better meet customer viewing needs, the UP-V9900 Series three models offer customized views of sales information. With this unique configuration style, the UP-V9900 Series is ready for multiple types of businesses that an owner may have while still utilizing a common design that can be used other locations.



Key Features

- Processor: 2.8 GHz Intel® Processor standard on all models
- 15" Touch Screen TFT LCD (15" diagonal)
- Magnetic Card Reader: Standard on the entire UP-V9900 series for quick processing of credit cards
- Small Footprint: With it's unique design the UP-V9900 series take up little space
- Memory Expansion: Supporting 2 GB memory (512 MB standard)
- USB Connectors: Connect additional peripherals such as scanners, printers and a keyboard to the USB (Universal Serial Bus) connectors
- Operating System: Microsoft Windows® XP® Professional compatibility
- OPOS: Common Control Object Drivers

Versatile Open POS Platform

Providing an Open POS architecture system using Microsoft Windows® XP® Professional, the UP-V9900 Series provides the flexibility for many types of operators, allowing them to choose Sharp-Certified Software Partners or use their own applications. With incredible versatility, Sharp has provided a POS system that can grow or change with the operator.

Speed is also no problem, so even processing the most intensive applications is a breeze. Standard on every model, the UP-V9900 Series delivers 2.8 GHz of Intel® processing power and 512 MB memory (expandable up to 2 GB).



Sharp UP-V9900 base model without customer display; ideal for table service restaurants



Sharp UP-V9900V with 2-line, 20 character VFD customer display screen; ideal for quick service restaurants, convenience stores or gas stations



Sharp UP-V-9900L with a 12.1" Class (12.1" diagonal) customer display TFT Touch Screen LCD for exceptional clarity and enhanced customer experience; ideal for quick service restaurants, convenience stores or gas stations

UP-V9900 SERIES SPECIFICATIONS



UP-V9900V Model

Specifications

CPU:	Intel® Celeron® 2.8 GHz
Memory:	512 MB (expandable to 2 GB)
Chipset:	Intel® 82945G Express Chipset
AC 97 Codec:	Realtek™ AC 97 Audio
PCI LAN Controller:	Realtek™ RTL8111B(10/100/1000Mbps)
Touch Controller:	Pen Mount DMC-9000

I/O Interfaces

- One Multi-mode Parallel Port
- Four Serial Ports
- Six USB Ports (two rear ports, two front side, two internal)
- One PS/2 styles Keyboard
- One LAN Port for RJ45 Connector
- One CBX (cash drawer) Port
- One Remote VGA Port in Parallel Port
- One H/P Jack

BIOS

- Phoenix-Award BIOS
- SMBIOS, Plug and Play (PnP), Advanced Configuration and Power-Management Interface (ACPI) supported

Expansion

- One Mini-PCI slot

Dimensions

UP-V9900:	15.6" W x 15.4" D x 12.2" H, 9.85 lbs.
UP-V9900V:	15.6" W x 16.5" D x 12.2" H, 10.45 lbs.
UP-V9900L:	15.6" W x 16.8" D x 14.4" H, 12.15 lbs.

Optional Equipment

- Cash Drawer: UP-V01DW

Certified Software

- XProtean® - sold by Sharp
- Posera® Maitre' D® POS Solutions
- Squirrel Systems - Squirrel One Restaurant System



SHARP ELECTRONICS CORPORATION
 Sharp Plaza, Mahwah, NJ 07495-1163
 1-800-BE-SHARP • www.sharppusa.com



Manufactured by Valcretec